

Program chairs

Kim G. Larsen, Aalborg, Denmark

Joost-Pieter Katoen, Aachen, Germany

Organizers

Andrzej Wasowski, Copenhagen, Denmark

Uli Fahrenberg, Aalborg, Denmark

Contact

Uli Fahrenberg

Department of Computer Science

Aalborg University

Selma Lagerløfs Vej 300

9220 Aalborg Øst

Denmark

Phone: +45 99 40 89 28

Email: uli@cs.aau.dk

<http://qmc.cs.aau.dk/>



QMC 2010

Quantitative Model Checking

PhD School

Copenhagen, Denmark

2-5 March 2010

[http://www.artist-embedded.org/artist/-
Quantitative-Model-Checking-2010-.html](http://www.artist-embedded.org/artist/-Quantitative-Model-Checking-2010-.html)

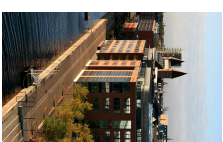


Lecturers



Finite-state model checking

Keijo Heljanko, Helsinki, Finland
Alessandro Cimatti, Trento, Italy
Pierre Wolper, Liege, Belgium



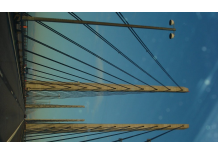
Real-time model checking

Nicolas Markey, Cachan, France
Patricia Bouyer-Decitre, Cachan, France
Kim G. Larsen, Aalborg, Denmark



Probabilistic model checking

Joost-Pieter Katoen, Aachen, Germany
Christel Baier, Dresden, Germany
David Parker, Oxford, UK



Hybrid model checking

Martin Fränzle, Oldenburg, Germany
Jean-François Raskin, Bruxelles, Belgium
Goran Frehse, Grenoble, France



The PhD school on quantitative model checking, **QMC 2010**, is organized by the European Network of Excellence **ARTIST Design** and the Danish VKR Center of Excellence **MT-LAB** and takes place at the IT University Copenhagen from 2 to 5 March 2010. It features lectures and other activities by world-renowned experts within the areas of real-time, probabilistic, and hybrid model checking.



The lectures will present advances within this broad field of quantitative model checking, providing an in-depth account of state-of-the-art modeling and logical formalisms, model checking algorithms as well as practical applications and offering hands-on experience of state-of-the-art quantitative model checking tools.

MT-LAB
A VKR CENTRE OF EXCELLENCE